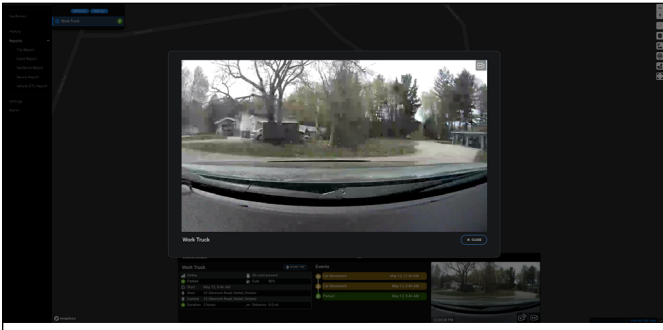


What it is

The Live Streaming feature provides remote access to real-time video streaming of the cabin and road cameras at any time.



Using live streaming in the web app.

How it works

Check-in on drivers when you're concerned about driver behavior or a parked vehicle in a questionable area. Raven auto-records and marks these as events so you can replay your streaming session at any time.



Accessing the Live Streaming feature.

How to use it

From the Web App

1. Open the Details panel at the bottom of the Dashboard.
2. In the bottom right corner, click the 'LTE Live Stream' icon on the preview image.
3. Switch between cabin and road views by clicking on the 'Camera Switch' icon

From the Mobile App

1. From the mobile app Dashboard, select the preview image on the top half of the screen.
2. Switch between cabin and road views by selecting the camera icon in the lower-right corner of the screen.

Learn to Live Stream video with a step-by-step [video](#).

