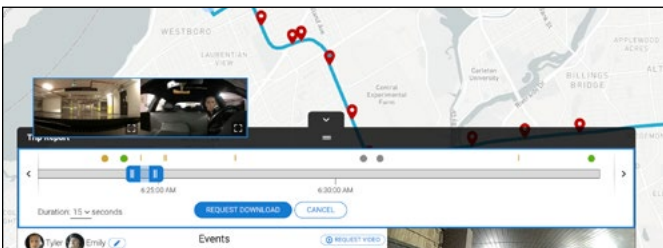


What it is

EVA provides an easy option to request video segments remotely. While events capture the majority of driving incidents, additional context around those events is sometimes necessary or business-impacting situations arise that aren't caught with driving behavior. The Enhanced Video Access (EVA) tool allows users to visually select and download a clip around a segment of interest. Videos of up to a minute can be retrieved.



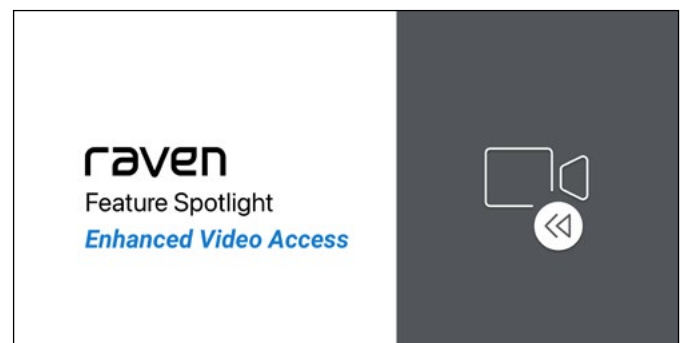
How to use it

EVA can be found in the Trip Review tab for any footage that remains available on the Raven device.

To request a video from the EVA feature:

1. Open the Vehicle Details panel from the Trip Review Tab and select "Request Video" in the 'Events' stack. The EVA timeline dragger will become available.
2. Click and drag the blue slider along the timeline, and a slug will appear over the blue trip timeline on the map and preview images above the slider. The color-coded dots on the timeline identify related events.
3. Once you've identified the segment of interest, select the desired duration and click 'Request Download,' then choose from which camera you would like the video to be retrieved.
4. When the request is complete, the HD Video will be available from the Events stack labeled 'User Video Request' at the time the recording took place. The video can be reviewed from the Web App or downloaded for sharing.

Learn about Enhanced Video Access with a [step-by-step video](#).



How it works

Raven's LTE connection enables communication with the cloud. The continuously recorded footage available on the SD card can be requested via the web app and pushed to the cloud as the user requests the content. EVA provides a trip timeline, visual indicator along the map, and preview images to help the user select a point of interest.

